

How to Delete An Existing AIC Wireless Profile and Re-Connect using the most up to date method

Windows 7

Overview:

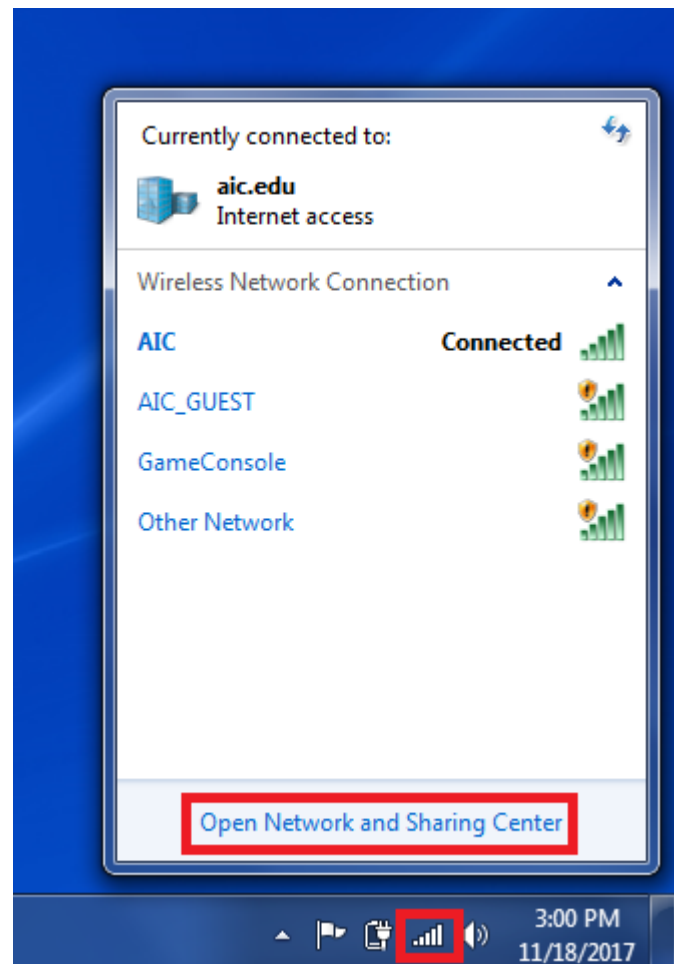
This article will show the user how to delete an existing wireless profile and connect using the most up to date method in Windows 7.

Symptoms:

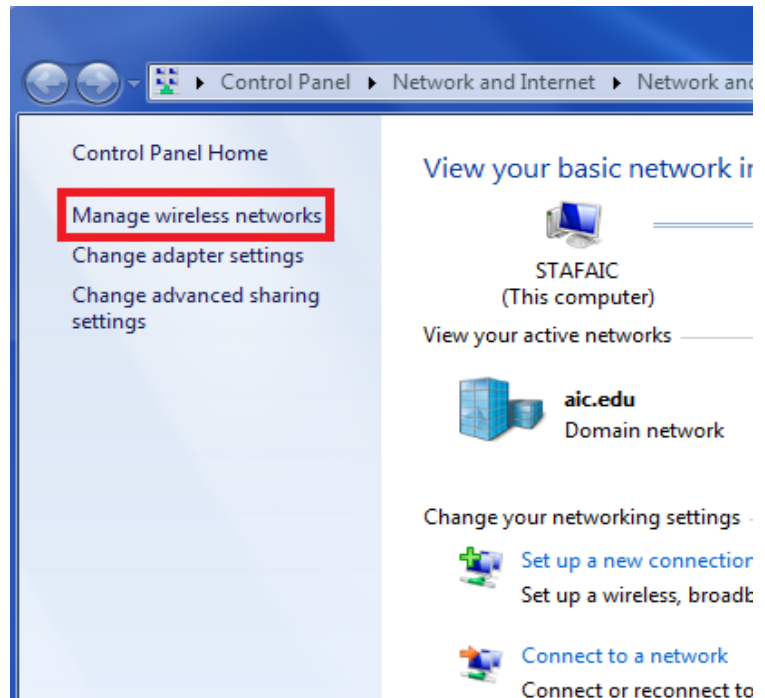
- Deleting an existing wireless profile.
- Connect wirelessly using the most up to date method.

Part 1

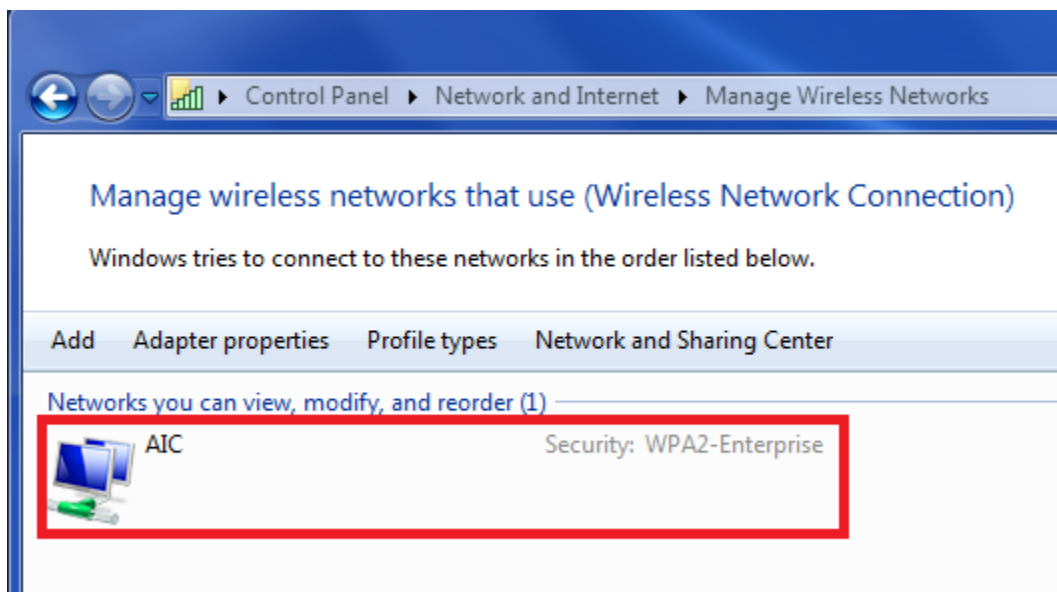
Navigate to the wireless icon located on the task bar. Then select "Open Network and Sharing Center."



Navigate to the top left side of the window and select “Manage known networks”

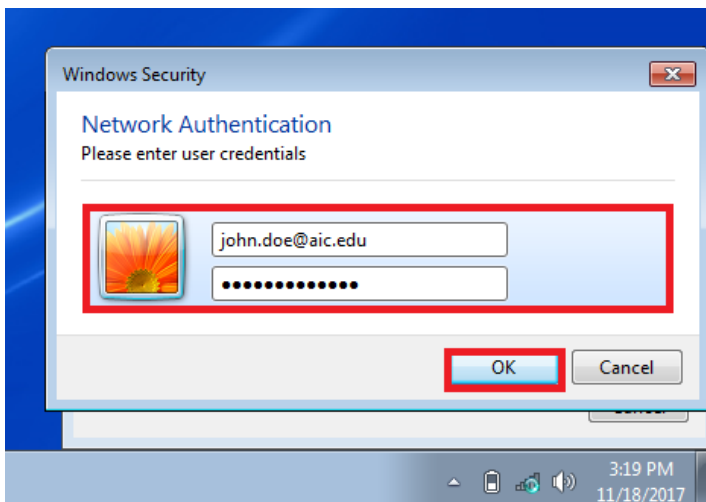
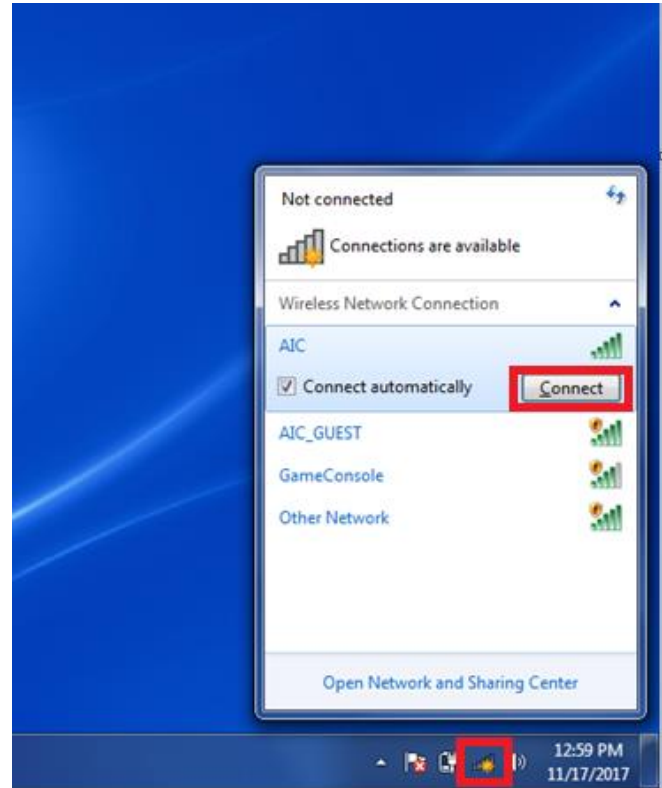


Right click or left click on the AIC wireless profile and select “Remove network” or “Remove”. Then close the window after.



Part 2

Click on the wireless icon on the task bar. Then select the AIC network and click connect. If prompted enter your AIC email and password.



A Windows Security Alert will come up. This is a trust certificate to allow the users credentials to connect to the network. Click "Connect" and it will connect the user to the network. The user has successfully joined the AIC wireless network.